



www.worldrivet.com

Please contact us upon your riveting requirements!

SUZHOU RIVMATE IMPORT & EXPORT CO.,LTD

Address: Room 9016 of 2# Building, No. 436 Changjiang Road,
Huqiu District, Suzhou City, Jiangsu Province, China 215011
Tel: 0086-512-65280456 Fax: 0086-512-65280262
E-mail: factory@world-rivet.com
http://www.world-rivet.com

JIANGSU WASHEN FASTENER MANUFACTURE CO.,LTD

Factory address: No.2 of Shuangyu Road of South Industry
Zone,Jingjiang city of JiangSu Province
Tel:0086-523-80237002 Fax:0086-523-80237111
E-mail:factory@world-rivet.com
http://www.world-rivet.com

RIVMATE RESERVE THE RIGHT TO EXPLAIN AND REVISE FOR BROCHURES



2025 Edition

SELF-CLINCHING SERIES

We provide not only products but solutions!

Automotive Lightweight
Riveting Solution



Scan to View Factory Video
In Youtube

Self-Clinching Nuts

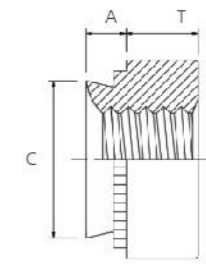
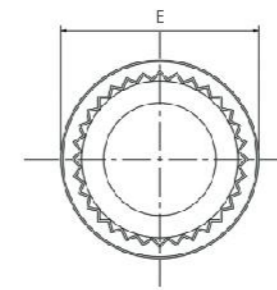
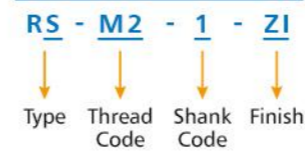


Self-Clinching Nuts (METRIC)

RWMATE

Washen

PART NUMBER DESIGNATION



Thread Size	Thread Code	Type			Shank Code	A Max.	Min Sheet Thickness	Hole Size In Sheet +0.08	C Max.	E ±0.25	T ±0.25	Min. Dist Hole To Edge
		Carbon Steel	Stainless Steel	Hardened Stainless Steel								
M2×0.4	M2	S	CLS	SP	0	0.77	0.8	4.22	4.2	6.35	1.5	4.8
					1	0.97	1					
					2	1.38	1.4					
					3	2.21	2.29					
M2.5×0.45	M2.5	S	CLS	SP	0	0.77	0.8	4.22	4.2	6.35	1.5	4.8
					1	0.97	1					
					2	1.38	1.4					
					3	2.21	2.29					
M3×0.5	M3.0	S	CLS	SP	0	0.77	0.8	4.22	4.2	6.35	1.5	4.8
					1	0.97	1					
					2	1.38	1.4					
					3	2.21	2.29					
M3.5×0.6	M3.5	S	CLS	SP	0	0.77	0.8	4.75	4.73	7.11	1.5	5.6
					1	0.97	1					
					2	1.38	1.4					
					3	2.21	2.29					
M4×0.7	M4	S	CLS	SP	0	0.77	0.8	5.41	5.38	7.87	2	6.9
					1	0.97	1					
					2	1.38	1.4					
					3	2.21	2.29					
M5×0.8	M5	S	CLS	SP	0	0.77	0.8	6.35/6.4	6.33/6.38	8.64	2	7.1
					1	0.97	1					
					2	1.38	1.4					
					3	2.21	2.29					
M6×1.0	M6	S	CLS	SP	0.8	0.77	0.8	8.75	8.73	11.18	4.08	8.6
					00	0.89	0.92					
					0	1.15	1.2					
					1	1.38	1.4					
					1.9	1.95	2					
					2	2.21	2.29					
M8×1.25	M8	S	CLS	SP	0	1.15	1.2	10.5	10.47	12.7	5.47	9.7
					1	1.38	1.4					
					1.9	1.95	2					
					2	2.21	2.29					
M10×1.5	M10	S	CLS	SP	0	1.6	1.7	14	13.97	17.35	7.45	13.5
					1	2.21	2.29					
					2	3.05	3.18					
					00	1.6	1.7					
M12×1.75	M12	S	CLS	SP	0	2.21	2.29	17	16.95	20.57	8.5	16
					1	3.05	3.18					
					2	5.95	6					

Self-Clinching Nuts



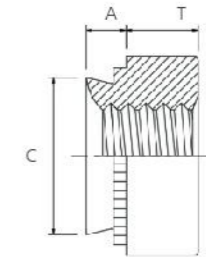
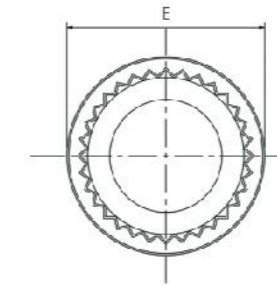
Self-Clinching Nuts (UNIFIED)

RVMATE

Washen

PART NUMBER DESIGNATION

RS - 256 - 1 - ZI
 ↓ ↓ ↓ ↓
 Type Thread Code Shank Code Finish Code



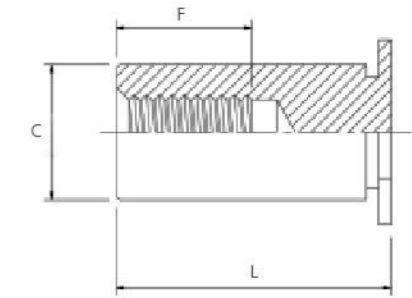
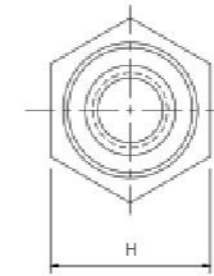
Thread Size	Thread Code	Type			Shank Code	A Max.	Min Sheet Thickness	Hole Size In Sheet +0.03	C Max.	E ±0.010	T ±0.010	Min. Dist Hole To Edge
		Carbon Steel	Stainless Steel	Hardened Stainless Steel								
.086-56 (#2-56)	256	S	CLS	SP	0	0.03	0.03	0.166	0.165	0.250	0.07	0.19
					1	0.038	0.04					
					2	0.054	0.056					
.099-48 (#3-48)	348	S	CLS	SP	0	0.03	0.03	0.166	0.165	0.250	0.07	0.19
					1	0.038	0.04					
					2	0.054	0.056					
.112-40 (#4-40)	440	S	CLS	SP	0	0.03	0.03	0.166	0.165	0.250	0.07	0.19
					1	0.038	0.04					
					2	0.054	0.056					
					3	0.087	0.09					
.138-32 (#6-32)	632	S	CLS	SP	0	0.03	0.03	0.188	0.187	0.280	0.07	0.22
					1	0.038	0.04					
					2	0.054	0.056					
					3	0.087	0.09					
.164-32 (#8-32)	832	S	CLS	SP	0	0.03	0.03	0.213	0.212	0.310	0.09	0.27
					1	0.038	0.04					
					2	0.054	0.056					
					3	0.087	0.09					
.190-24 (#10-24)	024	S	CLS	SP	0	0.03	0.03	0.250	0.249	0.340	0.09	0.28
					1	0.038	0.04					
					2	0.054	0.056					
					3	0.087	0.09					
.190-32 (#10-32)	032	S	CLS	SP	0	0.03	0.03	0.250	0.249	0.340	0.09	0.28
					1	0.038	0.04					
					2	0.054	0.056					
					3	0.087	0.09					
.216-24 (#12-24)	1224	S	CLS	SP	0	0.045	0.047	0.277	0.276	0.370	0.13	0.31
					1	0.038	0.04					
					2	0.054	0.056					
					3	0.087	0.09					
.250-20 (#1/4-20)	0420	S	CLS	SP	0	0.054	0.056	0.344	0.343	0.440	0.17	0.34
					1	0.054	0.056					
					2	0.087	0.09					
					3	0.12	0.125					
.250-28 (#1/4-28)	0428	S	CLS	SP	0	0.054	0.056	0.344	0.343	0.440	0.17	0.34
					1	0.054	0.056					
					2	0.087	0.09					
					3	0.12	0.125					
.313-18 (#5/16-18)	0518	S	CLS	SP	0	0.054	0.056	0.413	0.412	0.500	0.23	0.38
					1	0.054	0.056					
					2	0.087	0.09					
					3	0.12	0.125					
.313-24 (#5/16-24)	0524	S	CLS	SP	0	0.054	0.056	0.413	0.412	0.500	0.23	0.38
					1	0.054	0.056					
					2	0.087	0.09					
					3	0.12	0.125					
.375-16 (#3/8-16)	0616	S	CLS	SP	0	0.087	0.09	0.500	0.499	0.560	0.27	0.44
					1	0.087	0.09					
					2	0.12	0.125					
					3	0.235	0.25					
.375-24 (#3/8-24)	0624	S	CLS	SP	0	0.087	0.09	0.500	0.499	0.560	0.27	0.44
					1	0.087	0.09					
					2	0.12	0.125					
					3	0.235	0.25					
.438-20	0720	S	CLS	SP	1	0.087	0.092	0.562	0.561	0.687	0.311	0.562
.500-13 (1/2-13)	0813	S	CLS	SP	1	0.12	0.125	0.656	0.655	0.810	0.36	0.63
					2	0.235	0.25					
.500-20 (1/2-20)	0820	S	CLS	SP	1	0.12	0.125	0.656	0.655	0.810	0.36	0.63
					2	0.235	0.25					

Blind Threaded Standoffs



PART NUMBER DESIGNATION
RBSO - M3 - 4 - ZI

↓ ↓ ↓ ↓
 Type Thread Length Finish
 Code Code Code Code



Thread Size	Thread Code	Type				Min Sheet Thickness	Hole Size In Sheet +0.08	C -0.13	H Nom.	Min. Dist Hole To Edge	Length "L" +0.05 -0.13 (Length Code in millimeters)	F Min.
		Carbon Steel	Stainless Steel	Aluminium	Hardened Stainless Steel							
M3x0.5	M3	BSO	BSOS	BSOA	BS04	1	4.22	4.2	4.8	6	3	1.0
											4	1.5
											5	3.0
											6	3.2
											7	4
											8	4
											9	4
											10	4
											11	6.5
											12	6.5
	13	6.5										
	14	6.5										
	15	6.5										
	16	6.5										
	17	9.5										
	18	9.5										
	3.5M3	BSO	BSOS	BSOA	BS04	1	5.41	5.39	6.4	6.8	3	1.0
											4	1.5
											5	3.0
											6	3.2
7											4	
8											4	
9											4	
10											4	
11											6.5	
12											6.5	
13	6.5											
14	6.5											
15	6.5											
16	6.5											
17	9.5											
18	9.5											
19	9.5											
20	9.5											
M3.5x0.6	M3.5	BSO	BSOS	BSOA	BS04	1	5.41	5.38	6.4	6.8	3	1.0
											4	1.5
											5	3.0
											6	3.2
											7	4
											8	4
											9	4
											10	4
											11	6.5
											12	6.5
											13	6.5
											14	6.5
											15	6.5
											16	6.5
											17	9.5
											18	9.5
											19	9.5
											20	9.5



Blind Threaded Standoffs (METRIC)

Thread Size	Thread Code	Type				Min Sheet Thickness	Hole Size In Sheet +0.08	C -0.13	H Nom.	Min. Dist Hole To Edge	Length "L" +0.05 -0.13 (Length Code in millimeters)	F Min.	
		Fastener Material											
		Carbon Steel	Stainless Steel	Aluminium	Hardened Stainless Steel								
M4x0.7	6.0M4	BSO	BSOS	BSOA	BS04	1.2	6	5.98	7	7.5	3	1.0	
											4	1.5	
											5	3.0	
											6	3.2	
											7	4.0	
											8	4.0	
											9	4.0	
											10	4.0	
											11	6.5	
											12	6.5	
											13	6.5	
											14	6.5	
											15	6.5	
											16	6.5	
											17	9.5	
	18	9.5											
	19	9.5											
	20	9.5											
	22	9.5											
	25	9.5											
	30	9.5											
	M4	M4	BSO	BSOS	BSOA	BS04	1.27	7.14	7.12	7.9	8	3	1.0
												4	1.5
												5	3.0
												6	3.2
												7	4
												8	4
												9	4
												10	4
												11	6.5
12												6.5	
13												6.5	
14												6.5	
15												6.5	
16												6.5	
17												9.5	
18		9.5											
19		9.5											
20		9.5											
22		9.5											
25		9.5											
30		9.5											
40		9.5											
M5x0.8		M5	BSO	BSOS	BSOA	BS04	1.27	7.14	7.12	7.9	8	3	1.0
												4	1.5
												5	3.0
												6	3.2
												7	4
												8	4
												9	4
												10	4
	11											6.5	
	12											6.5	
	13											6.5	
	14											6.5	
	15											6.5	
	16											6.5	
	17											9.5	
	18	9.5											
	19	9.5											
	20	9.5											
	22	9.5											
	25	9.5											
	30	9.5											
	40	9.5											
	M6x1.0	M6	BSO	BSOS	BSOA	BS04	1.3	8.75	8.72	10	8	6	3.2
												8	4
												10	4
												12	6.5
												14	6.5
												16	6.5
												18	9.5
												20	9.5
22												9.5	
30												9.5	
40												9.5	

Blind Threaded Standoffs (UNIFIED)



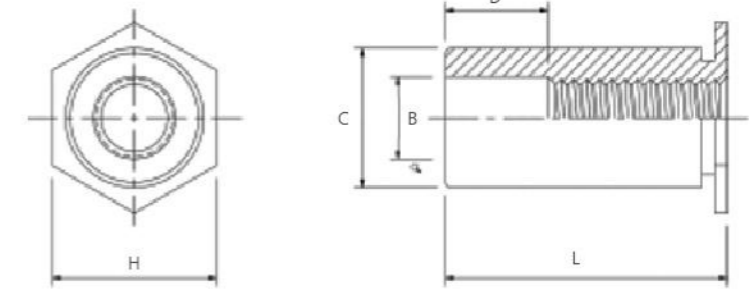
Thread Size	Thread Code	Type				Min Sheet Thickness	Hole Size In Sheet +0.003 -0.000	C +0.000 -0.005	H Nom.	Min. Dist Hole To Edge	Length "L" +.002 -.005 (Length Code in 32nds of an inch)	F Min.	
		Fastener Material											
		Carbon Steel	Stainless Steel	Aluminium	Hardened Stainless Steel								
.112-40 (#4-40)	440	BSO	BSOS	BSOA	BS04	0.04	0.166	0.165	0.187	0.23	10	0.156	
											12	0.156	
											14	0.187	
											16	0.250	
											18	0.250	
											20	0.250	
											22	0.375	
											24	0.375	
											26	0.375	
											28	0.375	
											30	0.375	
											32	0.375	
											34	0.375	
											10	0.156	
											12	0.156	
	14	0.187											
	16	0.250											
	18	0.250											
	20	0.250											
	22	0.375											
	24	0.375											
	26	0.375											
	28	0.375											
	30	0.375											
	32	0.375											
	34	0.375											
	.138-32 (#6-32)	632	BSO	BSOS	BSOA	BS04	0.04	0.213	0.212	0.25	0.27	10	0.156
												12	0.156
												14	0.187
												16	0.250
18												0.250	
20												0.250	
22												0.375	
24												0.375	
26												0.375	
28												0.375	
30												0.375	
32												0.375	
34												0.375	
10												0.156	
12												0.156	
14		0.187											
16		0.250											
18		0.250											
20		0.250											
22		0.375											
24		0.375											
26		0.375											
28		0.375											
30		0.375											
32		0.375											
34		0.375											
.164-32 (#8-32)		832	BSO	BSOS	BSOA	BS04	0.05	0.281	0.28	0.312	0.31	10	0.156
												12	0.156
												14	0.187
												16	0.250
	18											0.250	
	20											0.250	
	22											0.375	
	24											0.375	
	26											0.375	
	28											0.375	
	30											0.375	
	32											0.375	
	34											0.375	
	10											0.156	
	12											0.156	
14	0.187												
16	0.250												
18	0.250												
20	0.250												
22	0.375												
24	0.375												
26	0.375												
28	0.375												
30	0.375												
32	0.375												
34	0.375												
.190-32 (#10-32)	032	BSO	BSOS	BSOA	BS04	0.05	0.281	0.28	0.312	0.31	10	0.156	
											12	0.156	
											14	0.187	
											16	0.250	
											18	0.250	
											20	0.250	
											22	0.375	
											24	0.375	
											26	0.375	
											28	0.375	
											30	0.375	
											32	0.375	
											34	0.375	
											10	0.156	
											12	0.156	
14	0.187												
16	0.250												
18	0.250												
20	0.250												
22	0.375												
24	0.375												
26	0.375												
28	0.375												
30	0.375												
32	0.375												
34	0.375												

Through-Hole Threaded Standoffs



PART NUMBER DESIGNATION
RSO - M3 - 8 - Z1

Type Thread Code Length Code Finish Code



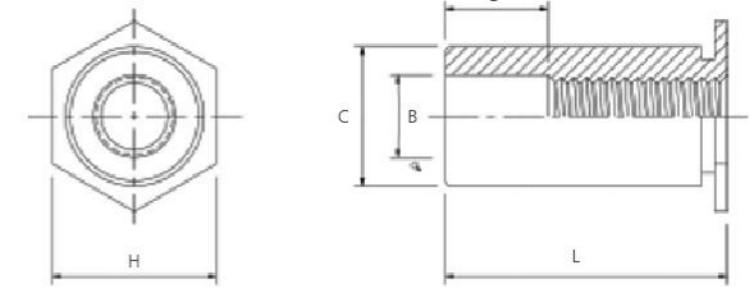
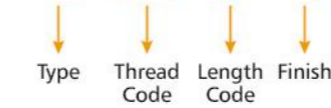
Thread Size	Thread Code	Type				Min Sheet Thickness	Hole Size In Sheet +0.08	B ±0.13	C -0.13	H Nom.	Min. Dist Hole To Edge	Length "L" +0.05 -0.13 (Length Code in millimeters)	D ±0.25
		Carbon Steel	Stainless Steel	Aluminium	Hardened Stainless Steel								
M3×0.5	M3	SO	SOS	SOA	S04	1	4.22	3.2	4.2	4.8	6	4 6 8 10 12 14 16 18	/ 4 8
	3.5M3	SO	SOS	SOA	S04	1	5.41	3.2	5.39	6.4	6.8	4 6 8 10 12 14 16 18 20	/ 4 8
M3.5×0.6	M3.5	SO	SOS	SOA	S04	1	5.41	3.9	5.39	6.4	6.8	4 6 8 10 12 14 16 18 20	/ 4 8
												4 6 8 10 12 14 16 18 20 25	/ 4 8 11
M4×0.7	6.0M4	SO	SOS	SOA	S04	1.2	6	4.8	5.98	7	7.5	4 6 8 10 12 14 16 18 20 22 25	/ 4 8 11
	M4	SO	SOS	SOA	S04	1.27	7.14	4.8	7.12	7.9	8	4 6 8 10 12 14 16 18 20 22 25	/ 4 8 11
M5×0.8	M5	SO	SOS	SOA	S04	1.27	7.14	5.35	7.12	7.9	8	4 6 8 10 12 14 16 18 20 22 25	/ 4 8 11
												8 10 12 14 16 18 20 22 25	/ 4 8 11
M6×1.0	M6	SO	SOS	SOA	S04	1.3	8.75	6.4	8.72	10	9	8 10 12 14 16 18 20 22 25	/ 4 8 11
												8 10 12 14 16 18 20 22 25	/ 4 8 11

Through-Hole Threaded Standoffs



PART NUMBER DESIGNATION

RSO - 440 - 8 - Z1



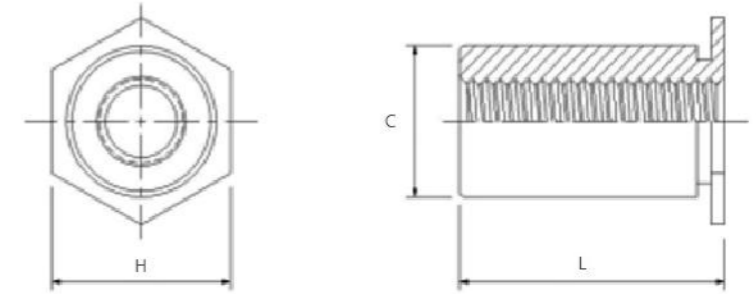
Thread Size	Thread Code	Type				Min Sheet Thickness	Hole Size In Sheet + .003 - .000	B ± .005	C + .000 - .005	H Nom.	Min. Dist Hole To Edge	Length "L" + .002 - .005 (Length Code in 32nds of an inch)	D ± .010
		Carbon Steel	Stainless Steel	Aluminium	Hardened Stainless Steel								
.112-40 (#4-40)	440	SO	SOS	SOA	S04	0.04	0.166	0.125	0.165	0.187	0.23	4	/
												6	/
												8	/
												10	/
												12	/
												14	0.187
												16	/
												18	/
	20	/											
	22	0.312											
	24	/											
	26	/											
	28	/											
	30	/											
	32	/											
	34	/											
.138-32 (#6-32)	6440	SO	SOS	SOA	S04	0.04	0.213	0.125	0.212	0.25	0.27	4	/
												6	/
												8	/
												10	/
												12	/
												14	0.187
												16	/
												18	/
	20	/											
	22	0.312											
	24	/											
	26	/											
	28	/											
	30	/											
	32	/											
	34	/											
.138-32 (#6-32)	632	SO	SOS	SOA	S04	0.04	0.213	0.156	0.212	0.25	0.27	4	/
												6	/
												8	/
												10	/
												12	/
												14	0.187
												16	/
												18	/
	20	/											
	22	0.312											
	24	/											
	26	/											
	28	/											
	30	0.437											
	32	/											
	34	/											
.138-32 (#6-32)	8632	SO	SOS	SOA	S04	0.05	0.281	0.156	0.28	0.312	0.31	4	/
												6	/
												8	/
												10	/
												12	/
												14	0.187
												16	/
												18	/
	20	/											
	22	0.312											
	24	/											
	26	/											
	28	/											
	30	0.437											
	32	/											
	34	/											
.164-32 (#8-32)	832	SO	SOS	SOA	S04	0.05	0.281	0.188	0.28	0.312	0.31	4	/
												6	/
												8	/
												10	/
												12	/
												14	0.187
												16	/
												18	/
	20	/											
	22	0.312											
	24	/											
	26	/											
	28	/											
	30	0.437											
	32	/											
	34	/											
.190-32 (#10-32)	032	SO	SOS	SOA	S04	0.05	0.281	0.203	0.28	0.312	0.31	4	/
												6	/
												8	/
												10	/
												12	/
												14	0.187
												16	/
												18	/
	20	/											
	22	0.312											
	24	/											
	26	/											
	28	/											
	30	0.437											
	32	/											
	34	/											

Through-Hole Threaded Standoffs



PART NUMBER DESIGNATION
RSOO - M3 - 10 - ZI

Type Thread Code Length Code Finish



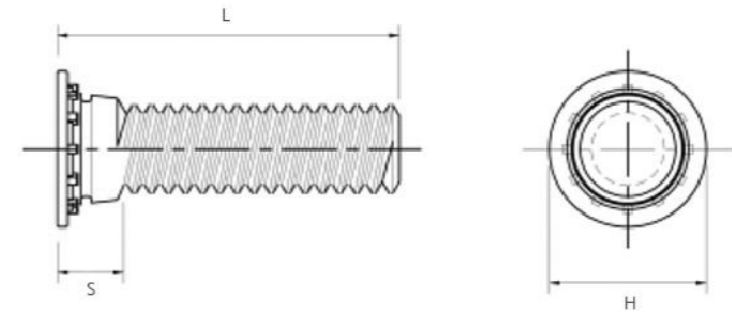
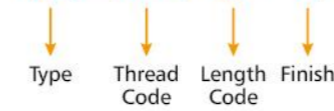
Thread Size	Thread Code	Type				Min Sheet Thickness	Hole Size In Sheet +0.08	C -0.13	H Nom.	Min. Dist Hole To Edge	Length "L" +0.05 -0.13 (Length Code in millimeters)
		Carbon Steel	Stainless Steel	Aluminium	Hardened Stainless Steel						
M3x0.5	M3	SOO	SOOS	SOOA	SOO4	1	4.22	4.2	4.8	6	10 12 14 16
	3.5M3	SOO	SOOS	SOOA	SOO4	1	5.41	5.39	6.4	6.8	10 12 14 16 18
M3.5x0.6	M3.5	SOO	SOOS	SOOA	SOO4	1	5.41	5.39	6.4	6.8	10 12 14 16 18 20
											10 12 14 16 18 20
M4x0.7	6.0M4	SOO	SOOS	SOOA	SOO4	1.2	6	5.98	7	7.5	10 12 14 16 18 20 22
	M4	SOO	SOOS	SOOA	SOO4	1.27	7.14	7.12	7.9	8	10 12 14 16 18 20 22 24
M5x0.8	M5	SOO	SOOS	SOOA	SOO4	1.27	7.14	7.12	7.9	8	10 12 14 16 18 20 22 24
											10 12 14 16 18 20 22 24
M6x1.0	M6	SOO	SOOS	SOOA	SOO4	1.3	8.75	8.72	10	9	10 12 14 16 18 20 22 24
											10 12 14 16 18 20 22 24

Self-Clinching Studs



PART NUMBER DESIGNATION

RFH - M2.5 - 6 - ZI



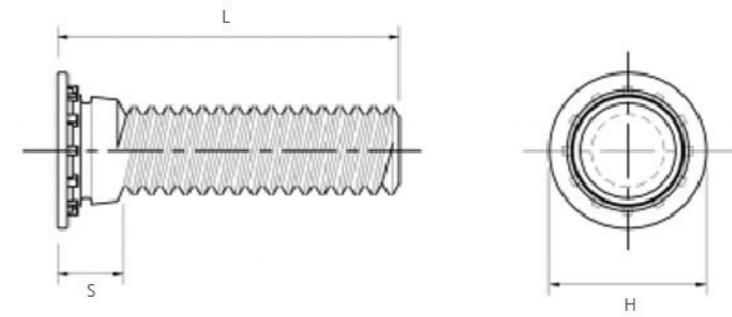
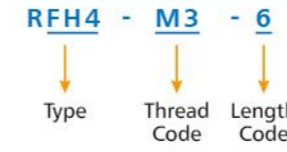
Thread Size	Thread Code	Type			Min Sheet Thickness	Hole Size In Sheet +0.08	H ±0.4	S Max.	Max Hole in Attached Parts	Min. Dist Hole To Edge	Length "L" +0.05 -0.13 (Length Code in millimeters)									
		Carbon Steel	Stainless Steel	Aluminium							6	8	10	12	15	18	-	-	-	-
M2.5×0.45	M2.5	FH	FHS	FHA	1	2.5	4.1	1.95	3.1	5.4	6	8	10	12	15	18	-	-	-	-
M3×0.5	M3	FH	FHS	FHA	1	3	4.6	2.1	3.6	5.6	6	8	10	12	15	18	20	25	-	-
M3.5×0.6	M3.5	FH	FHS	FHA	1	3.5	5.3	2.25	4.1	6.4	6	8	10	12	15	18	20	25	30	-
M4×0.7	M4	FH	FHS	FHA	1	4	5.9	2.4	4.6	7.2	6	8	10	12	15	18	20	25	30	35
M5×0.8	M5	FH	FHS	FHA	1	5	6.5	2.7	5.6	7.2	-	8	10	12	15	18	20	25	30	35
M6×1	M6	FH	FHS	FHA	1.6	6	8.2	3	6.6	7.9	-	-	10	12	15	18	20	25	30	35
M8×1.25	M8	FH	FHS	FHA	2.4	8	9.6	3.7	8.6	9.6	-	-	-	12	15	18	20	25	30	35

Thread Size	Thread Code	Type			Min Sheet Thickness	Hole Size In Sheet +.003 -0.000	H ±.015	S Max.	Max Hole in Attached Parts	Min. Dist Hole To Edge	Length Code "L" ±.015 (Length Code in 16ths of an inch)									
		Carbon Steel	Stainless Steel	Aluminium							0.25	0.312	0.375	0.5	0.625	0.75	0.875	1	1.25	1.5
.086-56 (#2-56)	256	FH	FHS	FHA	0.040	0.085	0.144	0.075	0.105	0.187	4	5	6	8	10	12	-	-	-	-
.112-40 (#4-40)	440	FH	FHS	FHA	0.040	0.111	0.176	0.085	0.135	0.219	4	5	6	8	10	12	14	16	20	-
.138-32 (#6-32)	632	FH	FHS	FHA	0.040	0.137	0.206	0.090	0.160	0.250	4	5	6	8	10	12	14	16	20	24
.164-32 (#8-32)	832	FH	FHS	FHA	0.040	0.163	0.237	0.090	0.185	0.281	4	5	6	8	10	12	14	16	20	24
.190-24 (#10-24)	024	FH	FHS	FHA	0.040	0.189	0.256	0.100	0.210	0.281	-	5	6	8	10	12	14	16	20	24
.190-32 (#10-32)	032	FH	FHS	FHA	0.040	0.189	0.256	0.100	0.210	0.281	-	5	6	8	10	12	14	16	20	24
.250-20 (#1/4-20)	0420	FH	FHS	FHA	0.062	0.249	0.337	0.135	0.270	0.312	-	-	6	8	10	12	14	16	20	24
.313-18 (#5/16-18)	0518	FH	FHS	FHA	0.093	0.311	0.376	0.160	0.333	0.375	-	-	-	8	10	12	14	16	20	24

Self-Clinching Studs



PART NUMBER DESIGNATION



Thread Size	Thread Code	Type		Min Sheet Thickness	Hole Size In Sheet +0.08	H ±0.4	S Max.	Max Hole in Attached Parts	Min. Dist Hole To Edge	Length "L" +0.05 -0.13 (Length Code in millimeters)									
		Fastener Material																	
		Hardened Stainless Steel	Stainless Steel							6	8	10	12	15	18	20	25	-	-
M3×0.5	M3	FH4	FHP	1-2.4	3	4.6	2.1	3.3	5.6	6	8	10	12	15	18	20	25	-	-
M4×0.7	M4	FH4	FHP	1-2.4	4	5.9	2.4	4.7	7.2	6	8	10	12	15	18	20	25	30	35
M5×0.8	M5	FH4	FHP	1-2.4	5	6.5	2.7	5.3	7.2	-	8	10	12	15	18	20	25	30	35
M6×1.0	M6	FH4	FHP	1.6-3	6	8.2	3	6.8	7.9	-	-	10	12	15	18	20	25	30	35

Thread Size	Thread Code	Type		Min Sheet Thickness	Hole Size In Sheet +.003 -0.000	H ±0.015	S Max.	Max Hole in Attached Parts	Min. Dist Hole To Edge	Length Code "L" ±.015 (Length Code in 16ths of an inch)									
		Fastener Material																	
		Hardened Stainless Steel	Stainless Steel							0.25	0.312	0.375	0.5	0.625	0.75	0.875	1	1.25	1.5
.112-40 (#4-40)	440	FH4	FHP	.040-.095	0.111	0.176	0.085	0.131	0.219	4	5	6	8	10	12	14	16	-	-
.138-32 (#6-32)	632	FH4	FHP	.040-.095	0.137	0.206	0.090	0.157	0.250	4	5	6	8	10	12	14	16	20	24
.164-32 (#8-32)	832	FH4	FHP	.040-.095	0.163	0.237	0.090	0.183	0.281	4	5	6	8	10	12	14	16	20	24
.190-32 (#10-32)	032	FH4	FHP	.040-.095	0.189	0.256	0.100	0.209	0.281	-	5	6	8	10	12	14	16	20	24
.250-20 (#1/4-20)	0420	FH4	FHP	.062-.117	0.249	0.337	0.135	0.269	0.312	-	-	6	8	10	12	14	16	20	24

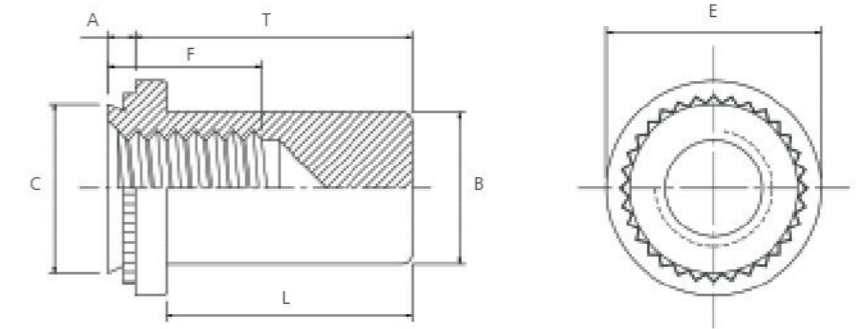
Self-Waterproof Nuts



PART NUMBER DESIGNATION

RB - M3 - 1 - Z1

Type Thread Code Shank Code Finish Code



Thread Size	Thread Code	Type		Shank Code	A Max.	Min Sheet Thickness	Hole Size In Sheet +0.08	B Max.	C Max.	E ±0.25	F Min.	L Min.	T ±0.25	Min. Dist Hole To Edge
		Fastener Material												
		Carbon Steel	Stainless Steel											
M3×0.5	M3	B	BS	1	0.97	1.0	4.22	3.84	4.2	6.38	5.3	8.5	9.6	4.8
				2	1.38	1.4								
M4×0.7	M4	B	BS	1	0.97	1.0	5.4	5.2	5.38	7.95	7.1	9.8	11.2	6.9
				2	1.38	1.4								
M5×0.8	M5	B	BS	1	0.97	1.0	6.35/6.4	6.02	6.33/6.38	8.75	7.1	9.8	11.2	7.1
				2	1.38	1.4								
M6×1.0	M6	B	BS	1	1.38	1.4	8.75	7.8	8.72	11.1	7.8	12.7	14.3	8.6
				2	2.21	2.3								
M8×1.25	M8	B	BS	1	1.38	1.4	10.5	9.7	10.47	12.7	9.1	13.4	15.5	9.7
				2	2.21	2.3								

Thread Size	Thread Code	Type		Shank Code	A Max.	Min Sheet Thickness	Hole Size In Sheet +.003 -0.000	B Max.	C Max.	E ±.010	F Min.	L Min.	T ±.010	Min. Dist Hole To Edge
		Fastener Material												
		Carbon Steel	Stainless Steel											
.112-40 (#4-40)	440	B	BS	1	0.038	0.040	0.166	0.150	0.165	0.250	0.210	0.335	0.380	0.19
				2	0.054	0.056								
.138-32 (#6-32)	632	B	BS	1	0.038	0.040	0.188	0.169	0.187	0.280	0.230	0.335	0.380	0.22
				2	0.054	0.056								
.164-32 (#8-32)	832	B	BS	1	0.038	0.040	0.213	0.204	0.212	0.310	0.280	0.385	0.440	0.27
				2	0.054	0.056								
.190-32 (#10-32)	032	B	BS	1	0.038	0.040	0.250	0.235	0.249	0.340	0.280	0.385	0.440	0.28
				2	0.054	0.056								
.250-20 (1/4-20)	0420	B	BS	1	0.054	0.056	0.344	0.305	0.343	0.430	0.310	0.500	0.560	0.34
				2	0.087	0.090								

