



Scan to View Factory Video  
In Youtube

2026 Edition

# SELF-CLINCHING SERIES

We provide not only products but solutions!

Automotive Lightweight  
Riveting Solution



[www.worldrivet.com](http://www.worldrivet.com)

Please contact us upon your riveting requirements!

#### SUZHOU RVMATE IMPORT & EXPORT CO.,LTD

Address: Room 9016 of 2# Building, No. 436 Changjiang Road,  
Huqiu District, Suzhou City, Jiangsu Province, China 215011

Tel: 0086-512-65280456 Fax: 0086-512-65280262

E-mail: [factory@world-rivet.com](mailto:factory@world-rivet.com)

<http://www.world-rivet.com>

#### JIANGSU WASHEN FASTENER MANUFACTURE CO.,LTD

Factory address: No.2 of Shuangyu Road of South Industry  
Zone,Jingjiang city of JiangSu Province

Tel:0086-523-80237002 Fax:0086-523-80237111

E-mail:[factory@world-rivet.com](mailto:factory@world-rivet.com)

<http://www.world-rivet.com>

RIVMATE RESERVE THE RIGHT TO EXPLAIN AND REVISE FOR BROCHURES



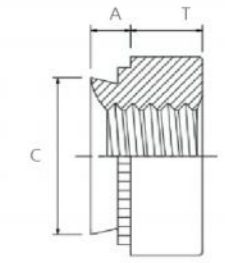
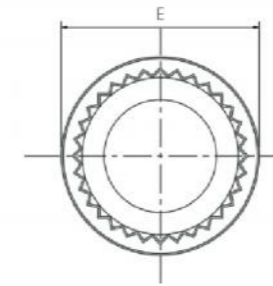
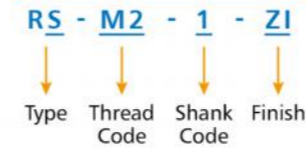
# Self-Clinching Nuts



Self-Clinching Nuts (METRIC)



**PART NUMBER DESIGNATION**



Thread Size	Thread Code	Type			Shank Code	A Max.	Min Sheet Thickness	Hole Size In Sheet +0.08	C Max.	E ±0.25	T ±0.25	Min. Dist Hole To Edge
		Carbon Steel	Stainless Steel	Hardened Stainless Steel								
M2×0.4	M2	RS	RCLS	RSP	0	0.77	0.8	4.22	4.2	6.35	1.5	4.8
					1	0.97	1					
					2	1.38	1.4					
					3	2.21	2.29					
M2.5×0.45	M2.5	RS	RCLS	RSP	0	0.77	0.8	4.22	4.2	6.35	1.5	4.8
					1	0.97	1					
					2	1.38	1.4					
					3	2.21	2.29					
M3×0.5	M3.0	RS	RCLS	RSP	0	0.77	0.8	4.22	4.2	6.35	1.5	4.8
					1	0.97	1					
					2	1.38	1.4					
					3	2.21	2.29					
M3.5×0.6	M3.5	RS	RCLS	RSP	0	0.77	0.8	4.75	4.73	7.11	1.5	5.6
					1	0.97	1					
					2	1.38	1.4					
					3	2.21	2.29					
M4×0.7	M4	RS	RCLS	RSP	0	0.77	0.8	5.41	5.38	7.87	2	6.9
					1	0.97	1					
					2	1.38	1.4					
					3	2.21	2.29					
M5×0.8	M5	RS	RCLS	RSP	0	0.77	0.8	6.35/6.4	6.33/6.38	8.64	2	7.1
					1	0.97	1					
					2	1.38	1.4					
					3	2.21	2.29					
M6×1.0	M6	RS	RCLS	RSP	0.8	0.77	0.8	8.75	8.73	11.18	4.08	8.6
					00	0.89	0.92					
					0	1.15	1.2					
					1	1.38	1.4					
					1.9	1.95	2					
					2	2.21	2.29					
M8×1.25	M8	RS	RCLS	RSP	0	1.15	1.2	10.5	10.47	12.7	5.47	9.7
					1	1.38	1.4					
					1.9	1.95	2					
					2	2.21	2.29					
M10×1.5	M10	RS	RCLS	RSP	0	1.6	1.7	14	13.97	17.35	7.45	13.5
					1	2.21	2.29					
					2	3.05	3.18					
					00	1.6	1.7					
M12×1.75	M12	RS	RCLS	RSP	0	2.21	2.29	17	16.95	20.57	8.5	16
					1	3.05	3.18					
					2	5.95	6					

# Self-Clinching Nuts



Self-Clinching Nuts (UNIFIED)

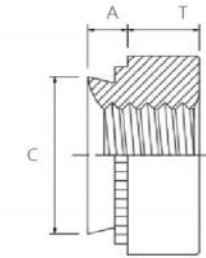
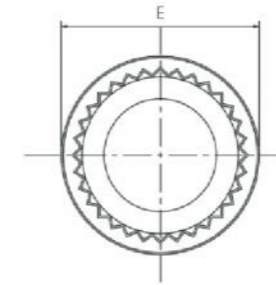
RVMATE

Washen

**PART NUMBER DESIGNATION**

**RS - 256 - 1 - ZI**

Type    Thread Code    Shank Code    Finish Code



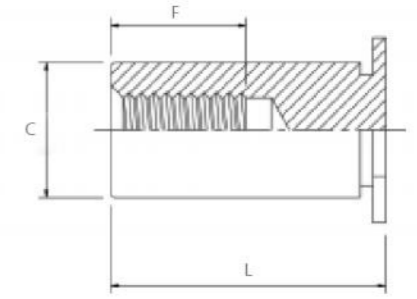
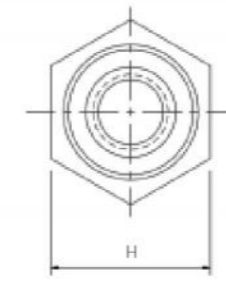
Thread Size	Thread Code	Type			Shank Code	A Max.	Min Sheet Thickness	Hole Size In Sheet +0.03	C Max.	E ±0.010	T ±0.010	Min. Dist Hole To Edge
		Carbon Steel	Stainless Steel	Hardened Stainless Steel								
.086-56 (#2-56)	256	RS	RCLS	RSP	0	0.03	0.03	0.166	0.165	0.250	0.07	0.19
					1	0.038	0.04					
					2	0.054	0.056					
.099-48 (#3-48)	348	RS	RCLS	RSP	0	0.03	0.03	0.166	0.165	0.250	0.07	0.19
					1	0.038	0.04					
					2	0.054	0.056					
.112-40 (#4-40)	440	RS	RCLS	RSP	0	0.03	0.03	0.166	0.165	0.250	0.07	0.19
					1	0.038	0.04					
					2	0.054	0.056					
					3	0.087	0.09					
.138-32 (#6-32)	632	RS	RCLS	RSP	0	0.03	0.03	0.188	0.187	0.280	0.07	0.22
					1	0.038	0.04					
					2	0.054	0.056					
					3	0.087	0.09					
.164-32 (#8-32)	832	RS	RCLS	RSP	0	0.03	0.03	0.213	0.212	0.310	0.09	0.27
					1	0.038	0.04					
					2	0.054	0.056					
					3	0.087	0.09					
.190-24 (#10-24)	024	RS	RCLS	RSP	0	0.03	0.03	0.250	0.249	0.340	0.09	0.28
					1	0.038	0.04					
					2	0.054	0.056					
					3	0.087	0.09					
.190-32 (#10-32)	032	RS	RCLS	RSP	0	0.03	0.03	0.250	0.249	0.340	0.09	0.28
					1	0.038	0.04					
					2	0.054	0.056					
					3	0.087	0.09					
.216-24 (#12-24)	1224	RS	RCLS	RSP	0	0.045	0.047	0.277	0.276	0.370	0.13	0.31
					1	0.038	0.04					
					2	0.054	0.056					
					3	0.087	0.09					
.250-20 (#1/4-20)	0420	RS	RCLS	RSP	0	0.054	0.056	0.344	0.343	0.440	0.17	0.34
					1	0.054	0.056					
					2	0.087	0.09					
					3	0.12	0.125					
.250-28 (#1/4-28)	0428	RS	RCLS	RSP	0	0.054	0.056	0.344	0.343	0.440	0.17	0.34
					1	0.054	0.056					
					2	0.087	0.09					
					3	0.12	0.125					
.313-18 (#5/16-18)	0518	RS	RCLS	RSP	0	0.054	0.056	0.413	0.412	0.500	0.23	0.38
					1	0.054	0.056					
					2	0.087	0.09					
					3	0.12	0.125					
.313-24 (#5/16-24)	0524	RS	RCLS	RSP	0	0.054	0.056	0.413	0.412	0.500	0.23	0.38
					1	0.054	0.056					
					2	0.087	0.09					
					3	0.12	0.125					
.375-16 (#3/8-16)	0616	RS	RCLS	RSP	0	0.087	0.09	0.500	0.499	0.560	0.27	0.44
					1	0.087	0.09					
					2	0.12	0.125					
					3	0.235	0.25					
.375-24 (#3/8-24)	0624	RS	RCLS	RSP	0	0.087	0.09	0.500	0.499	0.560	0.27	0.44
					1	0.087	0.09					
					2	0.12	0.125					
					3	0.235	0.25					
.438-20	0720	RS	RCLS	RSP	0	0.087	0.092	0.562	0.561	0.687	0.311	0.562
					1	0.087	0.092					
.500-13 (1/2-13)	0813	RS	RCLS	RSP	0	0.12	0.125	0.656	0.655	0.810	0.36	0.63
					1	0.12	0.125					
.500-20 (1/2-20)	0820	RS	RCLS	RSP	0	0.12	0.125	0.656	0.655	0.810	0.36	0.63
					1	0.12	0.125					

# Blind Threaded Standoffs



**PART NUMBER DESIGNATION**  
**RBSO - M3 - 4 - Z1**

Type    Thread Code    Length Code    Finish Code



Thread Size	Thread Code	Type				Min Sheet Thickness	Hole Size In Sheet +0.08	C -0.13	H Nom.	Min. Dist Hole To Edge	Length "L" +0.05 -0.13 (Length Code in millimeters)	F Min.	
		Carbon Steel	Stainless Steel	Aluminium	Hardened Stainless Steel								
M3	M3	RBSO	RBSOS	RBSOA	RBSO4	1	4.22	4.2	4.8	6	3	1.0	
											4	1.5	
											5	3.0	
											6	3.2	
											7	4	
											8	4	
											9	4	
											10	4	
											11	6.5	
											12	6.5	
	13	6.5											
	14	6.5											
	15	6.5											
	16	6.5											
	17	9.5											
	18	9.5											
	M3x0.5	3.5M3	RBSO	RBSOS	RBSOA	RBSO4	1	5.41	5.39	6.4	6.8	3	1.0
												4	1.5
												5	3.0
												6	3.2
7												4	
8												4	
9												4	
10												4	
11												6.5	
12												6.5	
13		6.5											
14		6.5											
15		6.5											
16		6.5											
17		9.5											
18		9.5											
19		9.5											
20		9.5											
M3.5x0.6		M3.5	RBSO	RBSOS	RBSOA	RBSO4	1	5.41	5.38	6.4	6.8	3	1.0
												4	1.5
	5											3.0	
	6											3.2	
	7											4	
	8											4	
	9											4	
	10											4	
	11											6.5	
	12											6.5	
	13	6.5											
	14	6.5											
	15	6.5											
	16	6.5											
	17	9.5											
	18	9.5											
	19	9.5											
	20	9.5											



## Blind Threaded Standoffs (METRIC)

Thread Size	Thread Code	Type				Min Sheet Thickness	Hole Size In Sheet +0.08	C -0.13	H Nom.	Min. Dist Hole To Edge	Length "L" +0.05 -0.13 (Length Code in millimeters)	F Min.
		Fastener Material										
		Carbon Steel	Stainless Steel	Aluminium	Hardened Stainless Steel							
M4x0.7	6.0M4	RBSO	RBSOS	RBSOA	RBSO4	1.2	6	5.98	7	7.5	3	1.0
											4	1.5
											5	3.0
											6	3.2
											7	4.0
											8	4.0
											9	4.0
											10	4.0
											11	6.5
											12	6.5
											13	6.5
											14	6.5
											15	6.5
											16	6.5
	M4	RBSO	RBSOS	RBSOA	RBSO4	1.27	7.14	7.12	7.9	8	17	9.5
											18	9.5
											19	9.5
											20	9.5
											22	9.5
											25	9.5
											30	9.5
											3	1.0
											4	1.5
											5	3.0
											6	3.2
											7	4
											8	4
											9	4
10	4											
11	6.5											
12	6.5											
13	6.5											
14	6.5											
15	6.5											
16	6.5											
17	9.5											
18	9.5											
19	9.5											
20	9.5											
22	9.5											
25	9.5											
30	9.5											
40	9.5											

## Blind Threaded Standoffs (UNIFIED)



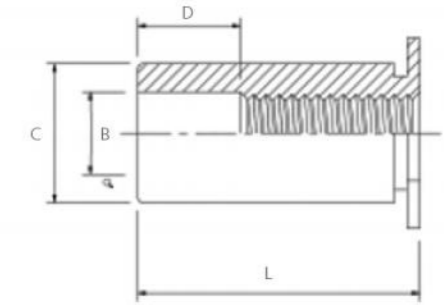
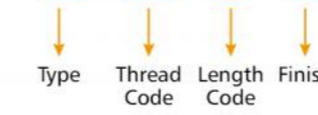
Thread Size	Thread Code	Type				Min Sheet Thickness	Hole Size In Sheet +0.003 -0.000	C +0.000 -0.005	H Nom.	Min. Dist Hole To Edge	Length "L" +.002 -.005 (Length Code in 32nds of an inch)	F Min.	
		Fastener Material											
		Carbon Steel	Stainless Steel	Aluminium	Hardened Stainless Steel								
.112-40 (#4-40)	440	RBSO	RBSOS	RBSOA	RBSO4	0.04	0.166	0.165	0.187	0.23	10	0.156	
											12	0.156	
											14	0.187	
											16	0.250	
											18	0.250	
											20	0.250	
											22	0.375	
											24	0.375	
											26	0.375	
											28	0.375	
											30	0.375	
											32	0.375	
											34	0.375	
											6440	RBSO	RBSOS
	12	0.156											
	14	0.187											
	16	0.250											
	18	0.250											
	20	0.250											
	22	0.375											
	24	0.375											
	26	0.375											
	28	0.375											
	30	0.375											
	32	0.375											
	34	0.375											
	.138-32 (#6-32)	632	RBSO	RBSOS	RBSOA	RBSO4	0.04	0.213	0.212	0.25			
											12	0.156	
14											0.187		
16											0.250		
18											0.250		
20											0.250		
22											0.375		
24											0.375		
26											0.375		
28											0.375		
30											0.375		
32											0.375		
34											0.375		
8632											RBSO	RBSOS	RBSOA
		12	0.156										
		14	0.187										
		16	0.250										
		18	0.250										
		20	0.250										
		22	0.375										
		24	0.375										
		26	0.375										
		28	0.375										
		30	0.375										
		32	0.375										
		34	0.375										
		.164-32 (#8-32)	832	RBSO	RBSOS	RBSOA	RBSO4	0.05	0.281	0.28			
12											0.156		
14	0.187												
16	0.250												
18	0.250												
20	0.250												
22	0.375												
24	0.375												
26	0.375												
28	0.375												
30	0.375												
32	0.375												
34	0.375												
.190-32 (#10-32)	032										RBSO	RBSOS	RBSOA
			12	0.156									
			14	0.187									
			16	0.250									
			18	0.250									
			20	0.250									
			22	0.375									
			24	0.375									
			26	0.375									
			28	0.375									
			30	0.375									
			32	0.375									
			34	0.375									

# Through-Hole Threaded Standoffs



**PART NUMBER DESIGNATION**

**RSO - M3 - 8 - Z1**



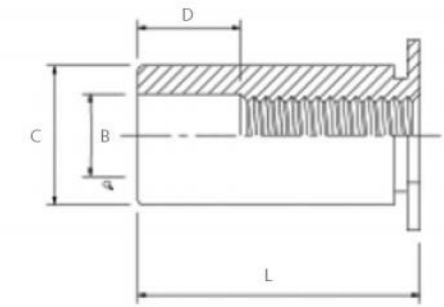
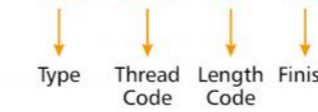
Thread Size	Thread Code	Type				Min Sheet Thickness	Hole Size In Sheet +0.08	B ±0.13	C -0.13	H Nom.	Min. Dist Hole To Edge	Length "L" +0.05 -0.13 (Length Code in millimeters)	D ±0.25	
		Carbon Steel	Stainless Steel	Aluminium	Hardened Stainless Steel									
M3×0.5	M3	RSO	RSOS	RSOA	RSO4	1	4.22	3.2	4.2	4.8	6	4	/	
				6										
				8										
				10										
				12										
				14										
	3.5M3	RSO	RSOS	RSOA	RSO4	1	5.41	3.2	5.39	6.4	6.8	16	8	
				18										
				20										
				4										
				6										
				8										
M3.5×0.6	M3.5	RSO	RSOS	RSOA	RSO4	1	5.41	3.9	5.39	6.4	6.8	4	/	
				6										
				8										
				10										
				12										
				14										
	M4×0.7	6.0M4	RSO	RSOS	RSOA	RSO4	1.2	6	4.8	5.98	7	7.5	16	8
					18									
					20									
					22									
					25									
					4									
M4		RSO	RSOS	RSOA	RSO4	1.27	7.14	4.8	7.12	7.9	8	8	6	/
				8										
				10										
				12										
				14										
				16										
M5×0.8	M5	RSO	RSOS	RSOA	RSO4	1.27	7.14	5.35	7.12	7.9	8	4	/	
				6										
				8										
				10										
				12										
				14										
	M6×1.0	M6	RSO	RSOS	RSOA	RSO4	1.3	8.75	6.4	8.72	10	9	8	/
					10									
					12									
					14									
					16									
					18									
													20	8
													22	
													25	
													8	
													10	
													12	
												14	4	
												16		
												18		
												20		
												22		
												25		

# Through-Hole Threaded Standoffs



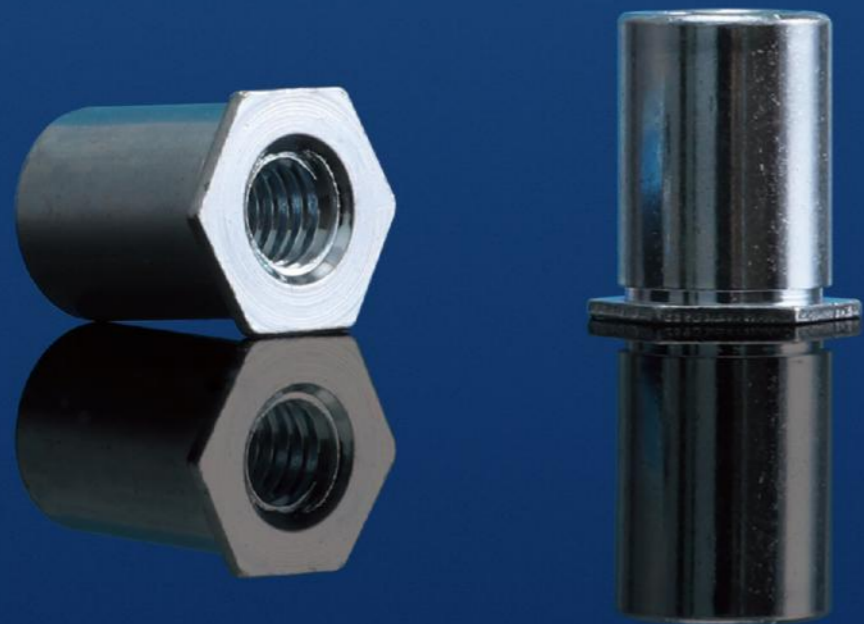
**PART NUMBER DESIGNATION**

**RSO - 440 - 8 - Z1**



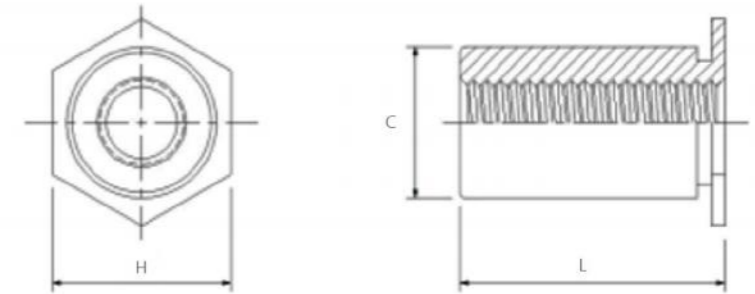
Thread Size	Thread Code	Type				Min Sheet Thickness	Hole Size In Sheet + .003 -.000	B ± .005	C + .000 -.005	H Nom.	Min. Dist Hole To Edge	Length "L" + .002 - .005 (Length Code in 32nds of an inch)	D ± .010	
		Carbon Steel	Stainless Steel	Aluminium	Hardened Stainless Steel									
.112-40 (#4-40)	440	RSO	RSOS	RSOA	RSO4	0.04	0.166	0.125	0.165	0.187	0.23	4	/	
												6	/	
												8	/	
												10	/	
												12	0.187	
												14	0.187	
												16	0.187	
												18	0.187	
	6440	RSO	RSOS	RSOA	RSO4	0.04	0.213	0.125	0.212	0.25	0.27	0.27	4	/
													6	/
													8	/
													10	/
													12	0.187
													14	0.187
													16	0.187
													18	0.187
.138-32 (#6-32)	632	RSO	RSOS	RSOA	RSO4	0.04	0.213	0.156	0.212	0.25	0.27	4	/	
												6	/	
												8	/	
												10	/	
												12	0.187	
												14	0.187	
												16	0.187	
												18	0.187	
	8632	RSO	RSOS	RSOA	RSO4	0.05	0.281	0.156	0.28	0.312	0.31	0.31	4	/
													6	/
													8	/
													10	/
													12	0.187
													14	0.187
													16	0.187
													18	0.187
.164-32 (#8-32)	832	RSO	RSOS	RSOA	RSO4	0.05	0.281	0.188	0.28	0.312	0.31	4	/	
												6	/	
												8	/	
												10	/	
												12	0.187	
												14	0.187	
												16	0.187	
												18	0.187	
	.190-32 (#10-32)	032	RSO	RSOS	RSOA	RSO4	0.05	0.281	0.203	0.28	0.312	0.31	4	/
													6	/
													8	/
													10	/
													12	0.187
													14	0.187
													16	0.187
													18	0.187

# Through-Hole Threaded Standoffs



**PART NUMBER DESIGNATION**  
**RS00 - M3 - 10 - ZI**

Type    Thread Code    Length Code    Finish



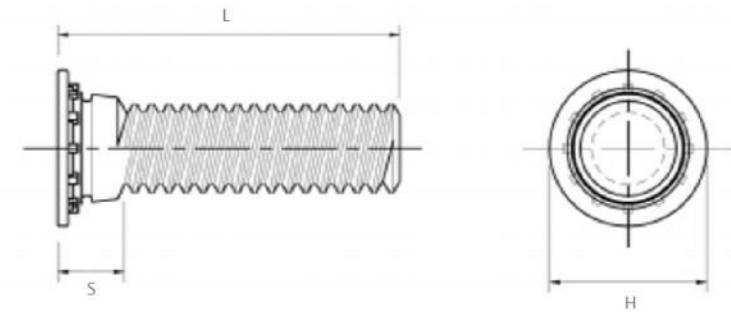
Thread Size	Thread Code	Type				Min Sheet Thickness	Hole Size In Sheet +0.08	C -0.13	H Nom.	Min. Dist Hole To Edge	Length "L" +0.05 -0.13 (Length Code in millimeters)
		Carbon Steel	Stainless Steel	Aluminium	Hardened Stainless Steel						
M3x0.5	M3	RS00	RS00S	RS00A	RS004	1	4.22	4.2	4.8	6	10 12 14 16
	3.5M3	RS00	RS00S	RS00A	RS004	1	5.41	5.39	6.4	6.8	10 12 14 16 18
M3.5x0.6	M3.5	RS00	RS00S	RS00A	RS004	1	5.41	5.39	6.4	6.8	10 12 14 16 18 20
M4x0.7	6.0M4	RS00	RS00S	RS00A	RS004	1.2	6	5.98	7	7.5	10 12 14 16 18 20 22
	M4	RS00	RS00S	RS00A	RS004	1.27	7.14	7.12	7.9	8	10 12 14 16 18 20 22 24
M5x0.8	M5	RS00	RS00S	RS00A	RS004	1.27	7.14	7.12	7.9	8	10 12 14 16 18 20 22 24
M6x1.0	M6	RS00	RS00S	RS00A	RS004	1.3	8.75	8.72	10	9	10 12 14 16 18 20 22 24

# Self-Clinching Studs



**PART NUMBER DESIGNATION**  
**RFH - M2.5 - 6 - ZI**

↓      ↓      ↓      ↓  
 Type   Thread Code   Length Code   Finish Code



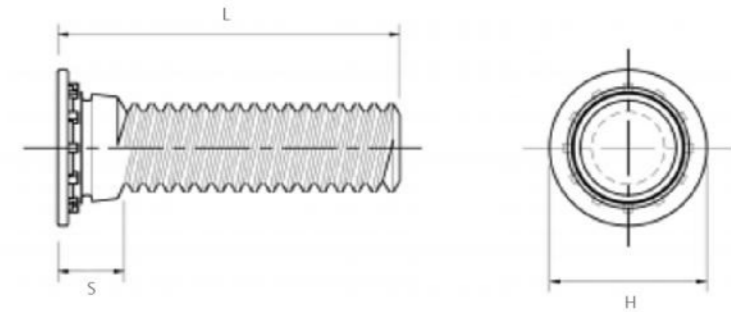
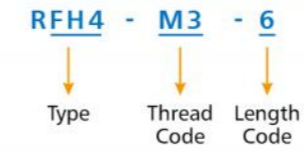
Thread Size	Thread Code	Type			Min Sheet Thickness	Hole Size In Sheet +0.08	H ±0.4	S Max.	Max Hole in Attached Parts	Min. Dist Hole To Edge	Length "L" ±0.4 (Length Code in millimeters)									
		Carbon Steel	Stainless Steel	Aluminium							6	8	10	12	15	18	-	-	-	-
M2.5×0.45	M2.5	RFH	RFHS	RFHA	1	2.5	4.1	1.95	3.1	5.4	6	8	10	12	15	18	-	-	-	-
M3×0.5	M3	RFH	RFHS	RFHA	1	3	4.6	2.1	3.6	5.6	6	8	10	12	15	18	20	25	-	-
M3.5×0.6	M3.5	RFH	RFHS	RFHA	1	3.5	5.3	2.25	4.1	6.4	6	8	10	12	15	18	20	25	30	-
M4×0.7	M4	RFH	RFHS	RFHA	1	4	5.9	2.4	4.6	7.2	6	8	10	12	15	18	20	25	30	35
M5×0.8	M5	RFH	RFHS	RFHA	1	5	6.5	2.7	5.6	7.2	-	8	10	12	15	18	20	25	30	35
M6×1	M6	RFH	RFHS	RFHA	1.6	6	8.2	3	6.6	7.9	-	-	10	12	15	18	20	25	30	35
M8×1.25	M8	RFH	RFHS	RFHA	2.4	8	9.6	3.7	8.6	9.6	-	-	-	12	15	18	20	25	30	35

Thread Size	Thread Code	Type			Min Sheet Thickness	Hole Size In Sheet +.003 -0.000	H ±0.15	S Max.	Max Hole in Attached Parts	Min. Dist Hole To Edge	Length Code "L" ±.015 (Length Code in 16ths of an inch)									
		Carbon Steel	Stainless Steel	Aluminium							0.25	0.312	0.375	0.5	0.625	0.75	0.875	1	1.25	1.5
.086-56 (#2-56)	256	RFH	RFHS	RFHA	0.040	0.085	0.144	0.075	0.105	0.187	4	5	6	8	10	12	-	-	-	-
.112-40 (#4-40)	440	RFH	RFHS	RFHA	0.040	0.111	0.176	0.085	0.135	0.219	4	5	6	8	10	12	14	16	20	-
.138-32 (#6-32)	632	RFH	RFHS	RFHA	0.040	0.137	0.206	0.090	0.160	0.250	4	5	6	8	10	12	14	16	20	24
.164-32 (#8-32)	832	RFH	RFHS	RFHA	0.040	0.163	0.237	0.090	0.185	0.281	4	5	6	8	10	12	14	16	20	24
.190-24 (#10-24)	024	RFH	RFHS	RFHA	0.040	0.189	0.256	0.100	0.210	0.281	-	5	6	8	10	12	14	16	20	24
.190-32 (#10-32)	032	RFH	RFHS	RFHA	0.040	0.189	0.256	0.100	0.210	0.281	-	5	6	8	10	12	14	16	20	24
.250-20 (#1/4-20)	0420	RFH	RFHS	RFHA	0.062	0.249	0.337	0.135	0.270	0.312	-	-	6	8	10	12	14	16	20	24
.313-18 (#5/16-18)	0518	RFH	RFHS	RFHA	0.093	0.311	0.376	0.160	0.333	0.375	-	-	-	8	10	12	14	16	20	24

# Self-Clinching Studs



**PART NUMBER DESIGNATION**



Thread Size	Thread Code	Type		Min Sheet Thickness	Hole Size In Sheet +0.08	H ±0.4	S Max.	Max Hole in Attached Parts	Min. Dist Hole To Edge	Length "L" ±0.4 (Length Code in millimeters)									
		Fastener Material																	
		Hardened Stainless Steel	Stainless Steel							6	8	10	12	15	18	20	25	-	-
M3×0.5	M3	RFH4	RFHP	1-2.4	3	4.6	2.1	3.3	5.6	6	8	10	12	15	18	20	25	-	-
M4×0.7	M4	RFH4	RFHP	1-2.4	4	5.9	2.4	4.7	7.2	6	8	10	12	15	18	20	25	30	35
M5×0.8	M5	RFH4	RFHP	1-2.4	5	6.5	2.7	5.3	7.2	-	8	10	12	15	18	20	25	30	35
M6×1.0	M6	RFH4	RFHP	1.6-3	6	8.2	3	6.8	7.9	-	-	10	12	15	18	20	25	30	35

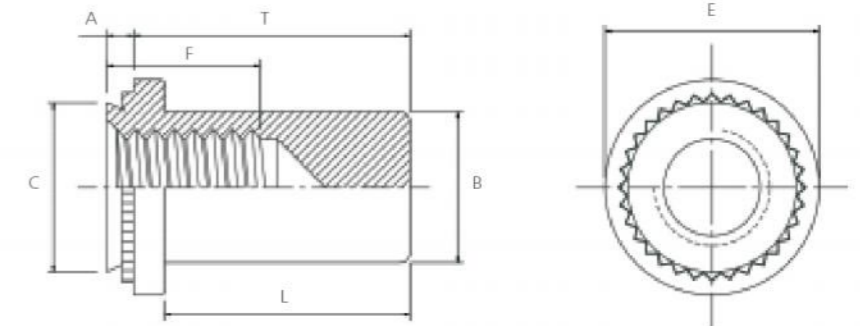
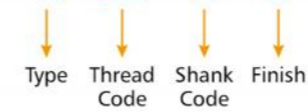
Thread Size	Thread Code	Type		Min Sheet Thickness	Hole Size In Sheet +.003 -0.000	H ±0.015	S Max.	Max Hole in Attached Parts	Min. Dist Hole To Edge	Length Code "L" ±.015 (Length Code in 16ths of an inch)									
		Fastener Material																	
		Hardened Stainless Steel	Stainless Steel							4	5	6	8	10	12	14	16	-	-
.112-40 (#4-40)	440	RFH4	RFHP	.040-.095	0.111	0.176	0.085	0.131	0.219	4	5	6	8	10	12	14	16	-	-
.138-32 (#6-32)	632	RFH4	RFHP	.040-.095	0.137	0.206	0.090	0.157	0.250	4	5	6	8	10	12	14	16	20	24
.164-32 (#8-32)	832	RFH4	RFHP	.040-.095	0.163	0.237	0.090	0.183	0.281	4	5	6	8	10	12	14	16	20	24
.190-32 (#10-32)	032	RFH4	RFHP	.040-.095	0.189	0.256	0.100	0.209	0.281	-	5	6	8	10	12	14	16	20	24
.250-20 (#1/4-20)	0420	RFH4	RFHP	.062-.117	0.249	0.337	0.135	0.269	0.312	-	-	6	8	10	12	14	16	20	24

# Self-Waterproof Nuts



**PART NUMBER DESIGNATION**

**RB - M3 - 1 - ZI**



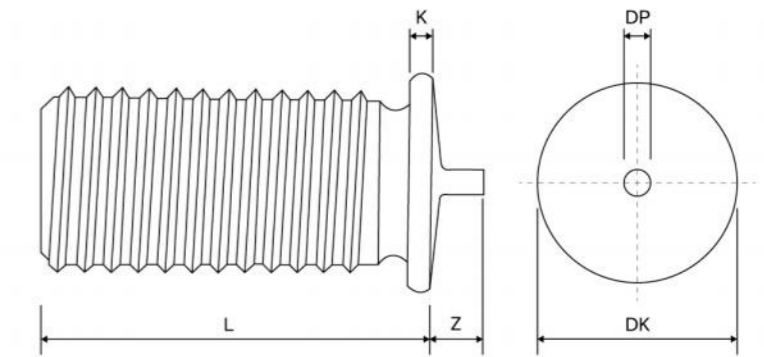
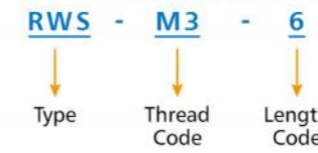
Thread Size	Thread Code	Type		Shank Code	A Max.	Min Sheet Thickness	Hole Size In Sheet +0.08	B Max.	C Max.	E ±0.25	F Min.	L Min.	T ±0.25	Min. Dist Hole To Edge
		Fastener Material												
		Carbon Steel	Stainless Steel											
M3×0.5	M3	RB	RBS	1	0.97	1.0	4.22	3.84	4.2	6.38	5.3	8.5	9.6	4.8
				2	1.38	1.4								
M4×0.7	M4	RB	RBS	1	0.97	1.0	5.4	5.2	5.38	7.95	7.1	9.8	11.2	6.9
				2	1.38	1.4								
M5×0.8	M5	RB	RBS	1	0.97	1.0	6.35/6.4	6.02	6.33/6.38	8.75	7.1	9.8	11.2	7.1
				2	1.38	1.4								
M6×1.0	M6	RB	RBS	1	1.38	1.4	8.75	7.8	8.72	11.1	7.8	12.7	14.3	8.6
				2	2.21	2.3								
M8×1.25	M8	RB	RBS	1	1.38	1.4	10.5	9.7	10.47	12.7	9.1	13.4	15.5	9.7
				2	2.21	2.3								

Thread Size	Thread Code	Type		Shank Code	A Max.	Min Sheet Thickness	Hole Size In Sheet +.003 -.000	B Max.	C Max.	E ±.010	F Min.	L Min.	T ±.010	Min. Dist Hole To Edge
		Fastener Material												
		Carbon Steel	Stainless Steel											
.112-40 (#4-40)	440	RB	RBS	1	0.038	0.040	0.166	0.150	0.165	0.250	0.210	0.335	0.380	0.19
				2	0.054	0.056								
.138-32 (#6-32)	632	RB	RBS	1	0.038	0.040	0.188	0.169	0.187	0.280	0.230	0.335	0.380	0.22
				2	0.054	0.056								
.164-32 (#8-32)	832	RB	RBS	1	0.038	0.040	0.213	0.204	0.212	0.310	0.280	0.385	0.440	0.27
				2	0.054	0.056								
.190-32 (#10-32)	032	RB	RBS	1	0.038	0.040	0.250	0.235	0.249	0.340	0.280	0.385	0.440	0.28
				2	0.054	0.056								
.250-20 (1/4-20)	0420	RB	RBS	1	0.054	0.056	0.344	0.305	0.343	0.430	0.310	0.500	0.560	0.34
				2	0.087	0.090								

# Welding Studs



**PART NUMBER DESIGNATION**



Thread Size	Type		DK		K		DP		Z		L
	Fastener Material		Max.	Min.	Max.	Min.	Max.	Min.	Max.	Min.	
	Carbon Steel	Stainless Steel									
M3x0.5	RWS	RWSS	4.7	4.3	1.4	0.7	0.78	0.52	0.55	0.3	6mm-40mm
M4x0.7	RWS	RWSS	5.7	5.3	1.4	0.7	0.78	0.52	0.65	0.4	6mm-40mm
M5x0.8	RWS	RWSS	6.7	6.3	1.4	0.8	0.88	0.62	0.83	0.5	6mm-40mm
M6x1.0	RWS	RWSS	7.7	7.3	1.4	0.8	0.88	0.62	0.83	0.6	8mm-50mm
M8x1.25	RWS	RWSS	9.7	9.3	1.5	0.9	0.88	0.62	0.93	0.7	10mm-50mm
M10x1.5	RWS	RWSS	11.7	11.3	1.5	0.9	1.1	0.85	1.03	0.8	12mm-50mm

